



MONN®

---

AXMINSTER



# ABOUT MONN

---



When renowned carpet-maker, Pieter Nouwens, launched MONN in 2012, he heralded in a new era of quality carpet manufacturing. The MONN brand – an acronym for the names of Pieter’s sons: Marcus, Oscar and Nicholas Nouwens – encapsulates the skills, talents, experience and sterling reputation of five generations of carpet-making craftsmanship.

MONN is a leading manufacturer of premium quality, bespoke, woven Axminster carpets for hospitality applications, in addition to its range of luxury Wilton carpets and innovative ranges of commercial carpet tiles.

Quality, integrity and reliability are non-negotiable for MONN and permeates every aspect of the business.

That is why we prioritise premium raw materials, invest in the latest textile technology and, most importantly, value and develop our team of people.

Our luxurious carpets stretch across offices, shops, casinos, hotels, restaurants, mosques, churches, palaces and homes, worldwide. Our high percentage of return clients is a testament to our commitment to consistent and reliable delivery of innovative, design-driven, carpet solutions for every interior space.

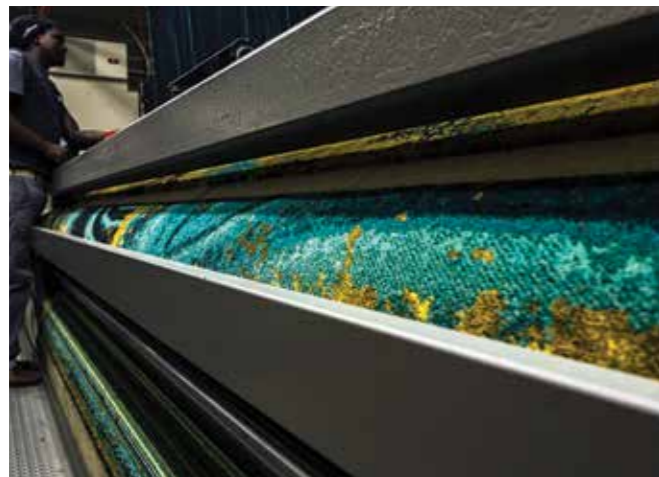
This commitment and passion makes each MONN carpet the ultimate expression of expert craftsmanship and creativity.



# FROM CONCEPT TO CARPET

---

4 - BESPOKE WOVEN CARPETS



No matter where you take your inspiration from – be it the intricacies of fractal patterns found in natural stone, or the organic shapes of foliage, stark urban graphics, striking geometrics or ethnic motifs – MONN can translate it into a beautifully crafted, quality carpet.

The experienced MONN design team works closely with you to develop your creative concept into a full-fledged carpet design that seamlessly marries floor finish with architectural interiors. MONN's Axminster design and weaving technology allows us to create perfect pattern repeats as well as single infinite designs with incredible precision and detail, down to a single tuft.

The MONN in-house yarn dyeing plant allows you to select a palette of colours from the spectrum of more than 600 standard colours, which are then specifically dyed for your individual project. We can also perfectly match custom hues to suit your interior scheme.

Once the design has been finalised, MONN prepares a Kibby carpet sample (available in 210 mm x 297 mm, 297 mm x 420 mm or 450 mm x 450 mm), which accurately renders how colour and design combinations play out within the carpet. Upon approval, your carpet goes into production at our state-of-the-art mill in Harrismith.





Endless creative  
possibilities  
meet incredible  
precision &  
superb quality

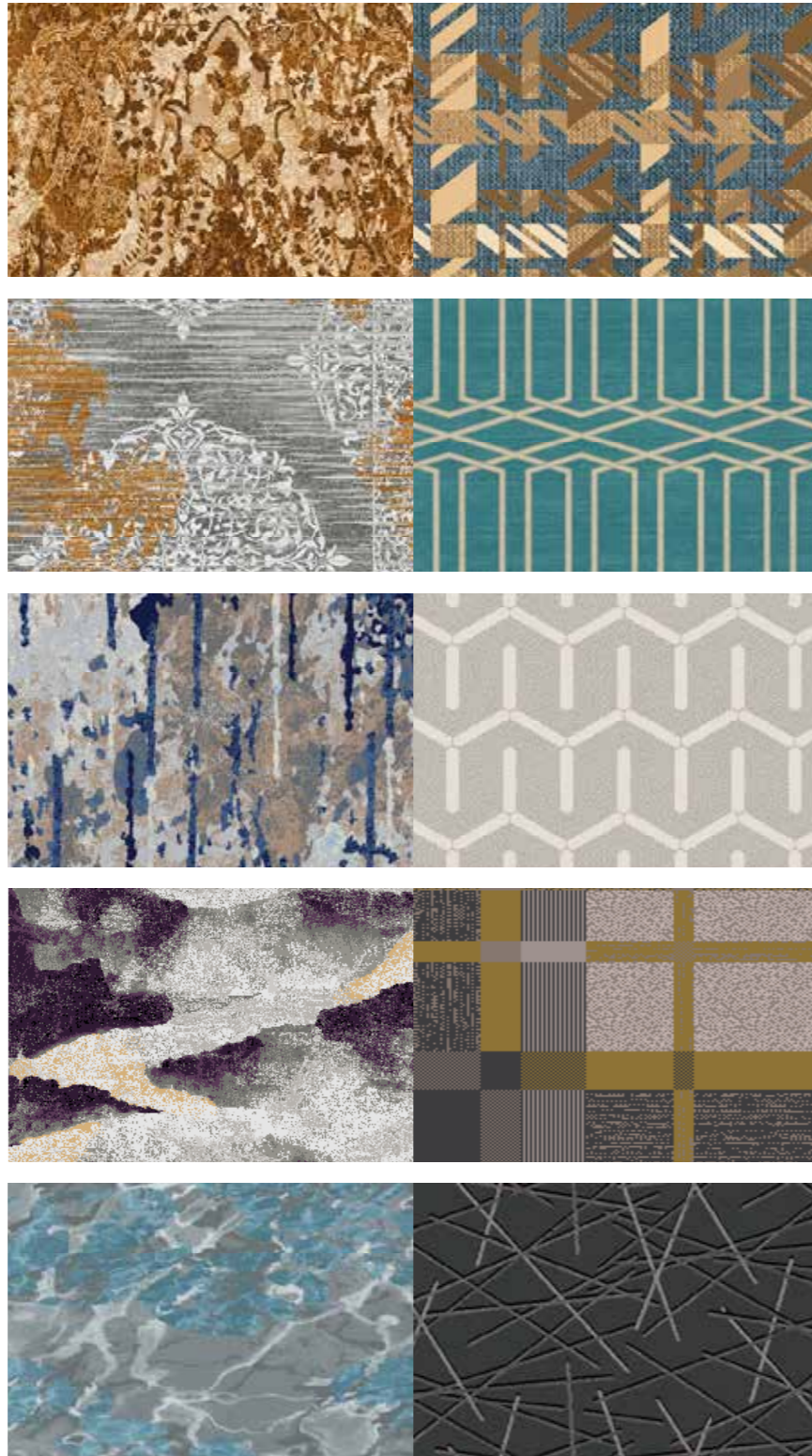


# DESIGN LIBRARY

MONN has an extensive design library available for your perusal. If you need some inspiration for a carpet design you can select one from the existing archive. The design can either be applied as it is or it can be tailor-made by our team of experienced designers into something unique for your project. You have the freedom to select different colours or to experiment with different scales or repeats of a pattern. The design can also be adjusted to suit the architecture of a space or developed into a whole range of patterns that compliment one another in a project.



## CONTEMPORARY



## GEOMETRICS

## NATURE

## TEXTURE

## TRADITIONAL





# MODULAR SOLUTIONS AXMINSTER TILES

---

10 - BESPOKE WOVEN CARPETS



The MONN Axminster carpet tile has been engineered as a loose-lay modular carpet solution that combines the precision and design freedom of broadloom Axminster weaving with the practicality and flexibility afforded by carpet-tile solutions. The MONN Axminster carpet tile allows for an unbounded pattern to be extended over multiple tile modules – each with a nominal size of 900 mm x 900 mm – creating a single, seamless, design. This Axminster construction has been specially modified and engineered for high traffic applications and is offered in 9 Row and 10 Row specifications.

The high-performance MONN Axminster carpet tile is the premium choice for application in the gaming, leisure and hospitality sectors. MONN's uncompromising pursuit of quality is the reason why our tiles are designed and produced for optimal performance, resistance to abrasion, colour fastness and dimensional stability. All of these, collectively, ensure the long-term durability of every installation.





# MATERIALS MATTER

Wool carpets provide luxury, comfort and durability. Wool has excellent sound and thermal insulation, as well as non-slip and fire-resistant characteristics when compared to hard flooring. The natural crimp of wool gives it a resilience to recover swiftly from compression caused by furniture and foot traffic. The pile of our Axminster carpets is woven using a blend of 80% pure new wool and 20% Nylon 66 fibre which aids durability and stain resistance.

To further ensure the integrity of the materials that comprise your carpet, the perfect blend of internationally sourced wools, and high-performance nylon fibre, is carded, spun and dyed on-site.

Because MONN controls every step of the custom carpet-making process, it gives us great flexibility in terms of the scale of projects on which we collaborate. We offer our tailored carpet design service to projects as small as 50 m<sup>2</sup>.

# PROJECTS & INSTALLATIONS

## COMPLETED PROJECTS

- **Acsiopolis**, Sandton
- **Bidvest** Lounges, OR Tambo & Cape Town International Airports
- **The Cape Grace Hotel**, Cape Town
- **The Capital** Hotel Group
- **Editions** Time Square, New York
- **Editions** Tampa, Florida
- **Editions** Reykjavik, Iceland
- **Embassy Gardens** Hotel, Accra, Ghana
- **Emperor's** Palace Hotel, Casino & Convention Resort, Johannesburg
- **Four Seasons** Miami, Florida
- **The Grand Palm** Hotel, Casino & Convention Resort, Gaborone, Botswana
- **Gold Reef City** Hotel & Casino, Johannesburg
- **Hilton** Garden Inn, Lusaka
- **Hôtel 2 Février** Lomé, Togo
- **IHG** Intercontinental, Lusaka
- **Ipic** Theaters, Florida
- **J W Marriott** Orlando, Florida
- **Marriott** Executive Apartments, Addis Ababa
- **Marriott** Executive Apartments, Johannesburg
- **Marriott** Hotel Melrose, Johannesburg
- **The Maslow** Time Square Hotel, Johannesburg
- **Mohegan Sun**, Connecticut
- **Monte Casino**, Johannesburg
- **Monticello Casino**, Santiago, Chile
- **Naledi Sun** Hotel & Casino, Thaba Nchu
- **Radisson Blu** Hotel, Lagos, Ikeja
- **Radisson Blu** Hotel Mosi-Oa-Tunya, Zambia
- **Radisson Blu** Okoume Palace Hotel, Gabon
- **Sabi Sun** Lifestyle Resort, Kruger Park
- **Serena** Hotel Group
- **Suncoast** Casino & Entertainment World, Durban
- **Sun City** Entertainment Centre, North West
- **Premier** Hotels & Resorts
- **Southern Sun** Waterfront, Cape Town
- **Southern Sun** The Cullinan, Cape Town
- **Thunder Valley Casino**, California
- **Waldorf Astoria Bonnet Creek**, Florida
- **The Westin**, Cape Town



MONN Axminster offers you an extensive range of product specifications. Our expert designers will work closely with you to ensure that you select the perfect carpet for your application. MONN Axminster bespoke woven broadloom carpet designs stretch across restaurants, hotel lobbies, passages and guestrooms, casinos, entertainment centres, conference venues, corporate offices and boardrooms,

bringing a definitive aesthetic, and lasting, quality finish to each of these spaces. MONN works across project scales to bring undeniable quality and satisfaction to all customers. Our long list of clientele includes the likes of: Tsogo Sun, Sun International, City Lodge, Holiday Inn, Protea Hotels, as well as Rezidor and Marriott. In addition to this, we cater to a number of boutique hotels, restaurants, clubs and corporates.



# MONN RUGS

---



MONN celebrates its expertise in carpet manufacturing with the introduction of MONN Rugs – a new bespoke woven service that unlocks the creative freedom of having any design translated into a plush rug.

Our rugs are available in 9 Row and 10 Row specifications and have a luxurious pile height of 10 mm.



# FITTING & SPECIFICATIONS



MONN Axminster rugs are woven with pile yarn that is 80% Pure New Wool, and 20% Nylon 6.6. (Wool origin: United Kingdom, New Zealand & European) The yarn count is 2/47's/660TEX.

Backing materials include Polyester, Cotton, Polypropylene, SBR Latex, Antistat, and Flame Retardant. Jute upon request. The maximum width output is 3,66m/12ft or 4,00m/13.12ft. Alternative pile specifications are available on request.

Alternative pile specifications available on request.

# SPECIFICATIONS

METRIC	METHOD	7-ROW	8-ROW	9-ROW	10-ROW	11-ROW
Pile height (mm)	ISO 1766	7.0	7.0	7.0	7.0	7.0
Pitch per 10cm	ISO 1763	27.6	27.6	27.6	27.6	27.6
Rows per 10cm	ISO 1763	27.6	31.5	35.4	39.4	43.3
Pile height above substrate (mm)	ISO 1766	7.0	7.0	7.0	7.0	7.0
Total thickness (mm)	ISO 1765	9.5	9.5	9.5	9.5	9.5
Surface pile mass (g/m <sup>2</sup> )	ISO 8543	762	874	980	1088	1213
Total pile mass (g/m <sup>2</sup> )	Calculated	1013	1088	1199	1318	1449
Total mass (g/m <sup>2</sup> )	ISO 8543	1650	1750	1850	2050	2150

IMPERIAL	METHOD	7-ROW	8-ROW	9-ROW	10-ROW	11-ROW
Pile height (inch)	ISO 1766	0.28	0.28	0.28	0.28	0.28
Pitch per inch	ISO 1763	7.0	7.0	7.0	7.0	7.0
Rows per inch	ISO 1763	7.0	8.0	9.0	10.0	11.0
Pile height above substrate	ISO 1766	0.28	0.28	0.28	0.28	0.28
Total thickness (inch)	ISO 1765	0.37	0.37	0.37	0.37	0.37
Surface pile mass (oz/yrd <sup>2</sup> )	ISO 8543	22.5	25.8	28.9	32.1	35.8
Total pile mass (oz/yrd <sup>2</sup> )	Calculated	29.9	32.1	35.4	38.9	42.8
Total mass (oz/yrd <sup>2</sup> )	ISO 8543	48.7	51.6	54.6	60.5	63.4

GRADING	METHOD	7-ROW	8-ROW	9-ROW	10-ROW	11-ROW
Use class	SANS 1375-2005	Class 3	Class 4	Class 5	Class 5	Class 5
	EN 1307	Class 32	Class 33	Class 33	Class 33	Class 33
Luxury class	EN 1307	LC4	LC4	LC5	LC5	LC5
Fire index class	EN 13501-1	Class Cfl-s1	Class Cfl-s1	Class Cfl-s1	Class Cfl-s1	Class Cfl-s1



# CONTACTS

18 - BESPOKE WOVEN CARPETS



[www.monncarpets.com](http://www.monncarpets.com)

**EMAIL USA**  
[enquiries@monncarpets.com](mailto:enquiries@monncarpets.com)

**EMAIL RSA**  
[enquiries@monn.co.za](mailto:enquiries@monn.co.za)

#### HEAD OFFICES

**USA | New York**  
+1 315 339 1749  
1204 North George Street  
Rome | NY | 13440  
[steven@monncarpets.com](mailto:steven@monncarpets.com)

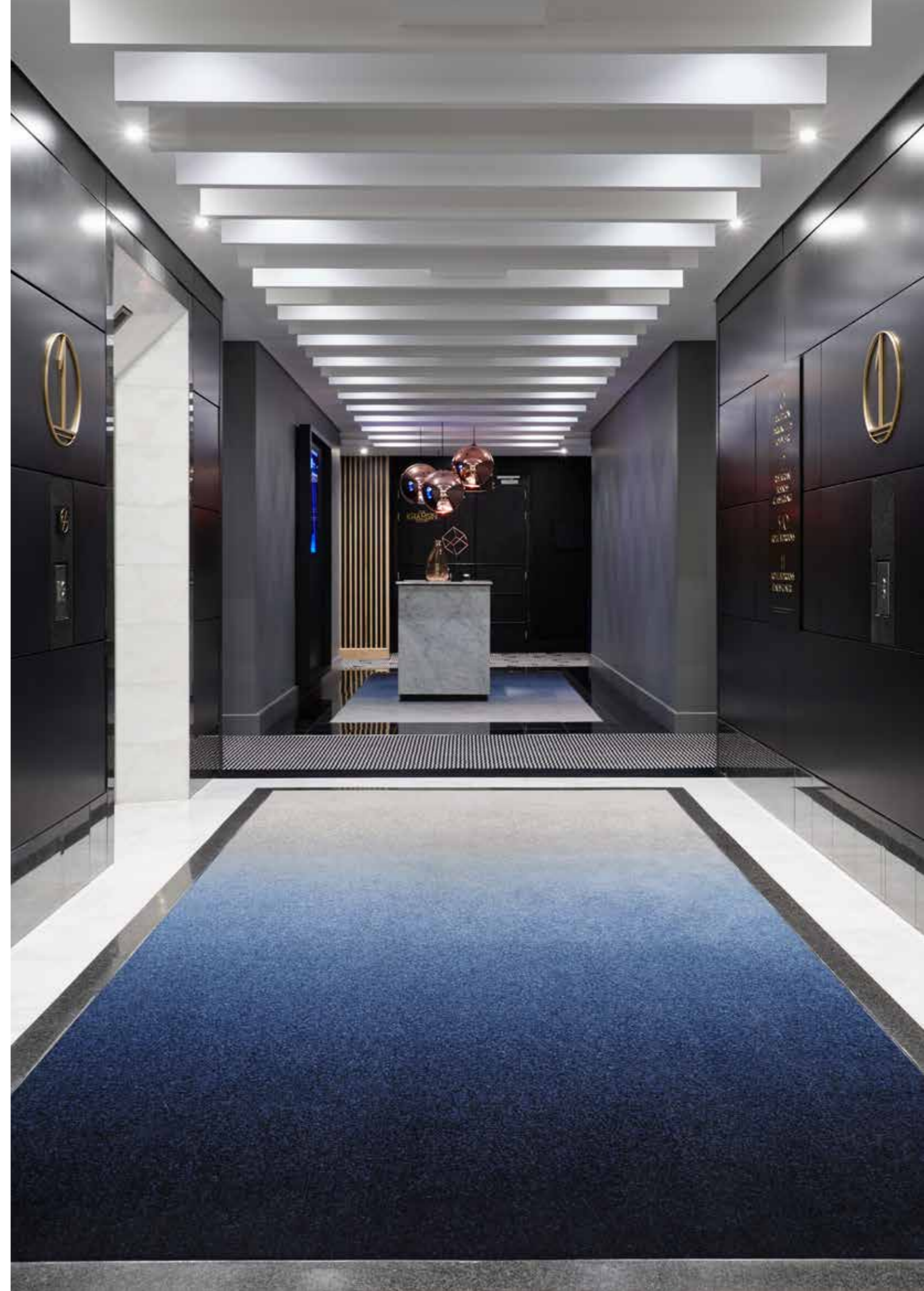
**USA | California**  
+1 949 235 7840  
29191 Aloma Avenue  
Laguna Niguel | CA | 92677  
[dusty@monncarpets.com](mailto:dusty@monncarpets.com)

**RSA | Harrismith**  
+27 58 623 2805  
1 Badenhorst Street  
Harrismith | 9880  
[marcus@monn.co.za](mailto:marcus@monn.co.za)

#### DESIGN & SALES

**Cape Town**  
+27 21 555 0751  
Shop 4 | Palata Building  
Bella Rosa Village  
Bella Rosa Street  
Bellville | 7530

**Johannesburg**  
+27 11 704 7379  
1st Floor | Building 3 |  
Kramerville Corner  
16 Desmond Road  
Kramerville  
Sandton | 2090





MONN®

---

AXMINSTER



A new generation of crafted carpets

South Africa | +27 58 623 2805  
USA | New York | +1 315 339 1749  
USA | California | +1 949 235 7840

[enquiries@monncarpets.com](mailto:enquiries@monncarpets.com)

[www.monncarpets.com](http://www.monncarpets.com)