

ubi

BY MONN



Ubi 05,06 & 10
Tessellated





Carpet tile redefined.

The product of generations of carpeting know-how and innovative manufacturing techniques, Ubi is a game changer in the commercial flooring space. Showcasing a groundbreaking woven make-up, Ubi brings about cost-effective modular soft flooring with no compromise in performance, quality or aesthetics.

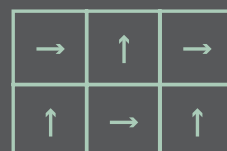
Available in an extensive palette of colourways, the solution-dyed nylon pile face of Ubi provides exceptional durability that makes light work of any commercial traffic. The look you want at the price you need. Ubi has your floor covered.

Ubi 08
Tessellated





Ubi 12
Tessellated





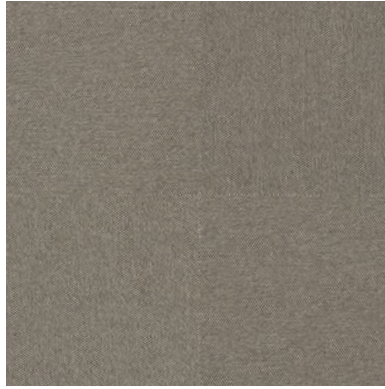
Specifications.

Use Class	Class 33 Heavy Commercial	BS EN 1307
Tile Size	500 x 500 mm	
Construction	Woven Loop Pile	
Fibre Type	MSix - Solution Dyed Nylon-6 Polyester Yarn	
Backing	300 g/m2 PES Polyester Nonwoven Comfort Back	
Tile Backing	Latex & Modified Bitumen	
Total Thickness	± 3.75 mm	SANS 150
Total Weight	± 2000 g/m2	SANS 8543
Recycled Content	20% of Total Weight	
Castor Chair Suitability	Intensive Use	BS EN 985
Fire Rating	Class Bfl-s1	BS EN 13501
VOC	Pass	Green Star SA
Dimensional Stability	Max 0.2%	BS EN 986
Static Propensity	< 2.0 kV	BS ISO 6356

Normal tolerances apply



#01



#02



#03



#04



#05



#06



#07



#08



#09

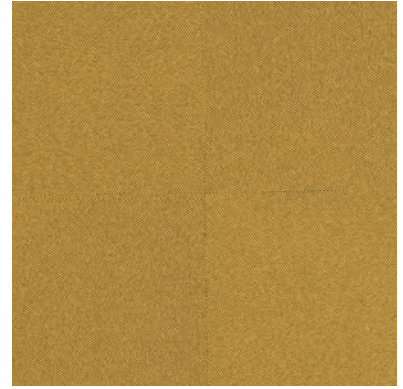
DISCLAIMER: Please note that colour samples are photographic representations only, and not exact indications of the final Ubi colours.



#10



#11



#12



#13



#14



#15



#16

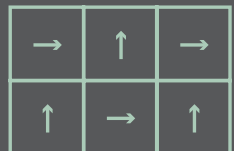


#17

DISCLAIMER: Please note that colour samples are photographic representations only, and not exact indications of the final Ubi colours.



Ubi 03
Tessellated



PERFORMANCE AND BENEFITS

Different colours from the Ubi range can be used to create borders, zones or accents within a floorspace. The modularity of Ubi allows for easy replacement of individual tiles that may get damaged or worn over time. Compared to needle-punch alternatives, Ubi's woven construction provides superior performance in a unique, contemporary-styled carpet tile.

COLOUR SELECTION

Choosing the ideal colour for the required application, in terms of traffic and use, is important to ensure the long-term appearance and serviceability of your Ubi floor. Consult our experienced sales representatives for advice on the best colour for your project.

STAIN RESISTANCE

Ubi is woven using MONN's premium MSix™ solution dyed nylon. This 100% solution-dyed nylon pile surface has superior colour fastness and stain resistance, ensuring that Ubi tiles retain their original appearance for longer.

MAINTENANCE

The effectiveness of any cleaning programme depends on careful supervision and the correct use of the right equipment. Consider a maintenance programme in accordance with SANS 10245:2008. Regular vacuuming and quick spill clean-up are the most effective and economical ways of maintaining your Ubi floor. Comprehensive maintenance guides are readily available from our sales offices and online at www.monn.co.za.

INSTALLATION

Installation is critical in ensuring that the full potential of your Ubi floorspace is realised. Fitting should be done by specialist contractors who install according to SANS 10186. Installation guides are included with each box of Ubi.

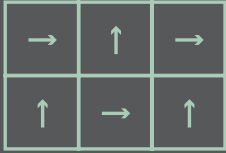


MSix®

Expertly Crafted
Super Durable Nylon 6



Ubi 01 & 13
Tessellated





Ubi 01 & 14
Tessellated



ubi

BY MONN

Head Office

Harrismith
+27 58 623 2805
enquiries@monn.co.za

Design & Sales Department

Johannesburg
+27 11 704 7379

Design & Sales Department

Cape Town
+27 21 555 0751

www.monn.co.za